

Championing Disability Inclusion

Inclusive leaders, inclusive businesses

November 25, 2020 03:00 PM CET



SPECIAL WEBCAST

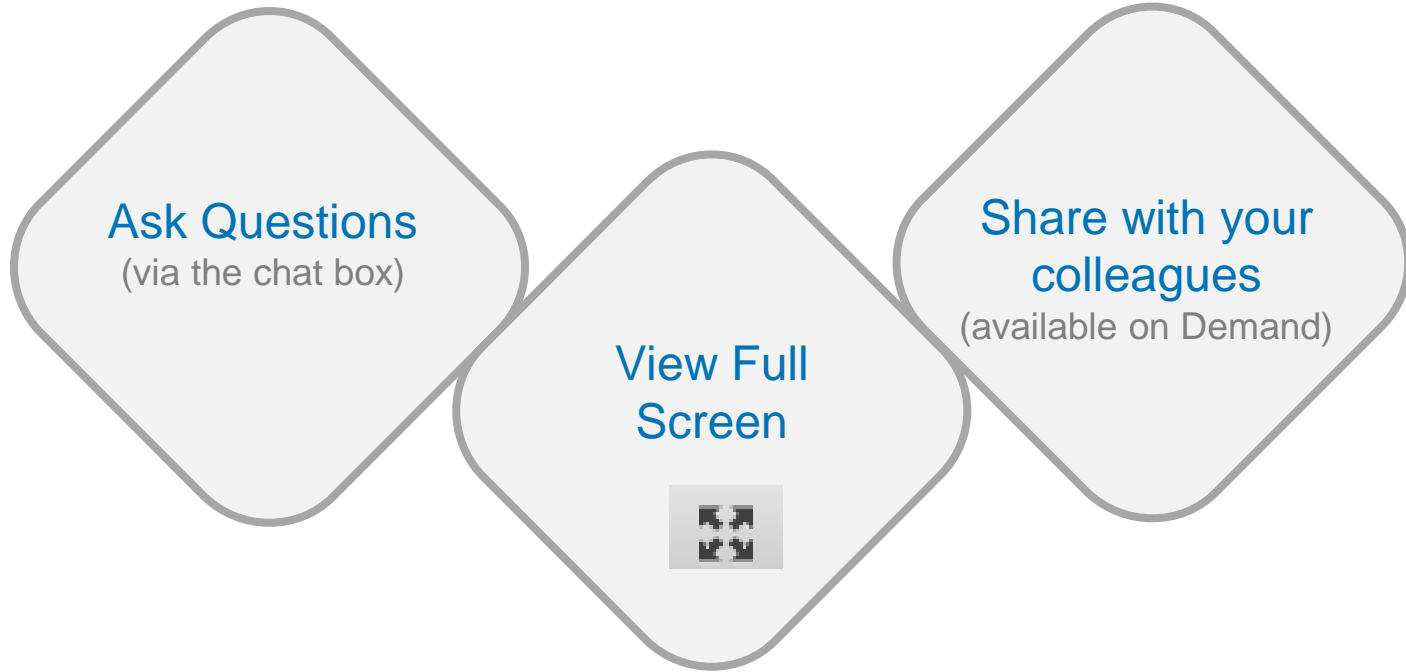
Urgent and
timely issues

Live captions are available during this event and it will be displayed on this screen. If you would like to view the captions on a full-sized screen, you can click on [THIS LINK](#) which is also provided in the Q&A box in the bottom left-hand side of your screen.

To amend the view, click on the settings wheel in the toolbar in the top right corner, and then you can amend the caption display to your individual preference, with font, text size, line spacing and colour combinations being amendable.



Making the most of the webcast



Tell us about your experience to help us improve our future program



Earn Credits

HRCI, SHRM, & CPE (NASBA)

- ✓ Click the link in the **CEU Request Pod** in the bottom right corner of the webcast console to sign up for credit
- ✓ Stay online for the entire webcast
- ✓ Click 'ok' for 3 popups that occur during the program
- ✓ Credit available for participation in live webcast only



Panelists:



Kristen Anderson

Chief Diversity and Inclusion Officer
Barilla

Kristen is currently the Chief Diversity Officer for Barilla and has been a member of the D&I Board since its formation in 2013. Kristen reports to the CEO of Barilla and leads a 12 member D&I Board, comprised of internal members from 8 key countries and 2 external advisors. [Full Bio](#)



Caroline Casey

Founder
The Valuable 500

Caroline Casey is an award-winning social entrepreneur and founder of The Valuable 500 - a catalyst for an inclusion revolution that exists to position disability equally on the global business leadership agenda.

Committed to building a global movement on in...[Full Bio](#)



Sarah Bond (Moderator)

Institute Director
The Conference Board

Sarah Bond is council director for the Diversity and Inclusion in Business Council (Europe). Bond has worked in the field of diversity and inclusion all her professional life, and now leads a consulting practice. She works with clients in the private, public, and humanitarian sectors in the UK, E...[Full Bio](#)



Why does this matter?

4%

Only 4% of businesses focus on making offerings inclusive of disability.

Return on Disability Report

7%

The cost of disability exclusion to OECD countries' GDP.

ILO

80%

of disabilities are acquired between the ages of 18 and 64, the workforce age.

Disabled Living Foundation

90%

of children with disabilities don't get an education.

UNICEF

1.3

Over 1.3 billion people across the world live with some form of disability.

World Bank Group

\$8tr

Together with their friends and family, this group has a spending power of \$8 trillion.

Return on Disability Report

50%

Disabled people are 50% more likely to experience poverty.

United Nations





[CLICK HERE](#)

*To tell us about
your experience!*

